

Convenient and worry-free

The carefree package: Planning & inheritance

Think about later early enough

Rely on the carefree package from swisspartners in all situations in life: regardless of age, any of us can find ourselves in a situation where others must make important decisions for us - because we are no longer able to do so ourselves. It is therefore best to take care of an advance care directive and a living will while you are still healthy. swisspartners develops solutions tailored to you, taking your individual family circumstances into account.

With wills and estate planning, swisspartners' experts help you to secure your assets in the long term and develop them across generations.

Advance directive and living will

Flexible service modules:

- Creation of an advance care directive, optionally including accompaniment to the notary
- Living will with personal consultation

Costs:

Advance care directive approach CHF 200
(excl. VAT and legal advice)

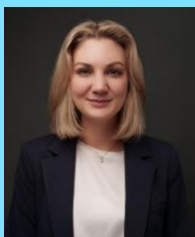
Estate planning and wills

Flexible service modules:

- Will drafting
- Estate planning

Costs:

Free initial consultation, legal advice between
CHF 280 and CHF 350 per hour (excl. VAT)



Your contact person

Patricia Stein
Legal Officer
Phone +41 58 200 06 51
Mobile +41 76 205 97 45
patricia.stein@swisspartners.com